

LAMPIRAN

LABORAN HASIL UJI LABORATORIUM

No Sampel : 121
Nama Pengirim : Ratni Pristiwati Hidayah
Tanggal Sampel diterima : 12 Desember 2020
Sampel Uji :
Tanggal Hasil : 25 Januari 2021

No	Parameter	Hasil Pemeriksaan					
1	Ekstrak Metanol Jamur Lingzhi Terhadap Bakteri <i>Clostridium</i> <i>perfringens</i>	Replikasi	Konsentrasi				
			B	C	D	E	F
		1	8,21	9,41	12,33	13,51	15,55
		2	8,32	9,49	12,46	13,25	15,61
		3	8,36	9,56	12,68	13,43	15,21
		4	8,66	9,36	12,64	13,59	15,28
		5	8,93	9,66	12,63	13,95	15,33
		Rata-Rata	8,45	9,49	12,55	13,55	15,39

Sidoarjo, 25 Januari 2021

Penanggung Jawab Lab Mikrobiologi

EVY RATNASARI EKAWATI, S.Si., M.Si

Ratni Pristiwati Hidayah

Ekstrak Metanol Jamur Lingzhi Terhadap Bakteri *Clostridium perfringens*

Test of Homogeneity of Variances

		Levene Statistic	df1	df2	Sig.
ZH	Based on Mean	3.618	5	24	.014
	Based on Median	1.429	5	24	.250
	Based on Median and with adjusted df	1.429	5	12.111	.282
	Based on trimmed mean	3.438	5	24	.017

ANOVA

ZH

	Sum of Squares	df	Mean Square	F	Sig.
Between Groups	753.931	5	150.786	4132.451	.000
Within Groups	.876	24	.036		
Total	754.807	29			

ZH

Duncan^a

		Subset for alpha = 0.05					
K	N	1	2	3	4	5	6
0	5	.0000					
20	5		8.4960				
40	5			9.4960			
60	5				12.5480		
80	5					13.5460	
100	5						15.4080
Sig.		1.000	1.000	1.000	1.000	1.000	1.000

Means for groups in homogeneous subsets are displayed.

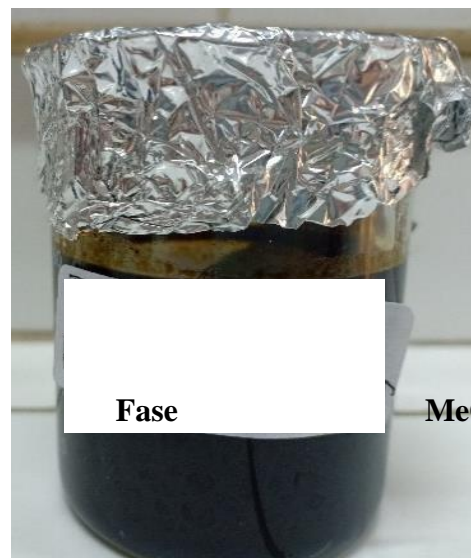
a. Uses Harmonic Mean Sample Size = 5.000.

Foto Alat-alat Ekstraksi



Proses Maserasi

Hasil Filtrat Maserasi



Proses Evaporasi

Ekstrak Metanol



Praktikum Uji Laboratorium di Laboratorium Mikrobiologi fakultas Ilmu Kesehatan Universitas Maarif Hasyim Latif, Sidoarjo